

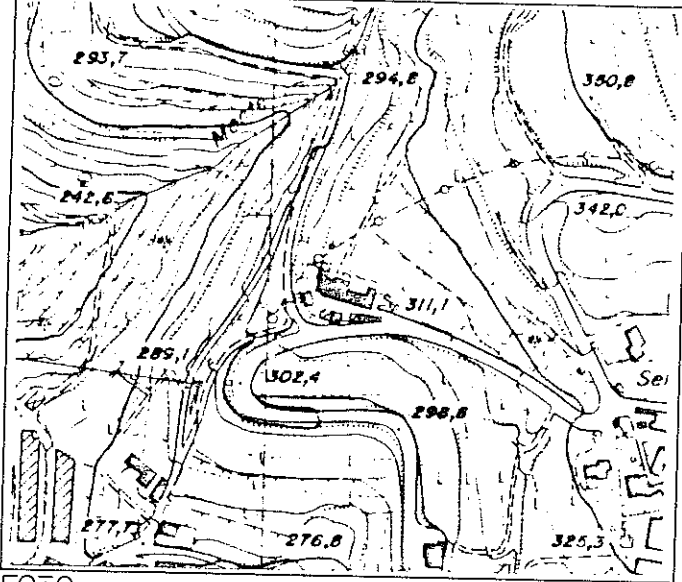
COMUNE DI MEZZANE
provincia di Verona

5

INTERVENTI EDIFICATORI E URBANISTICI
art. 10 L.R. 24/85

CORTE RURALE
COLOMBARA

CONTESTO 1:5000



DESCRIZIONE

Corte rurale di modesto
valore architettonico ma che
riveste una notevole valenza
ambientale dovuta alle
ubicazione di dominio sulle
notostante valle.

FOTO

FOTO



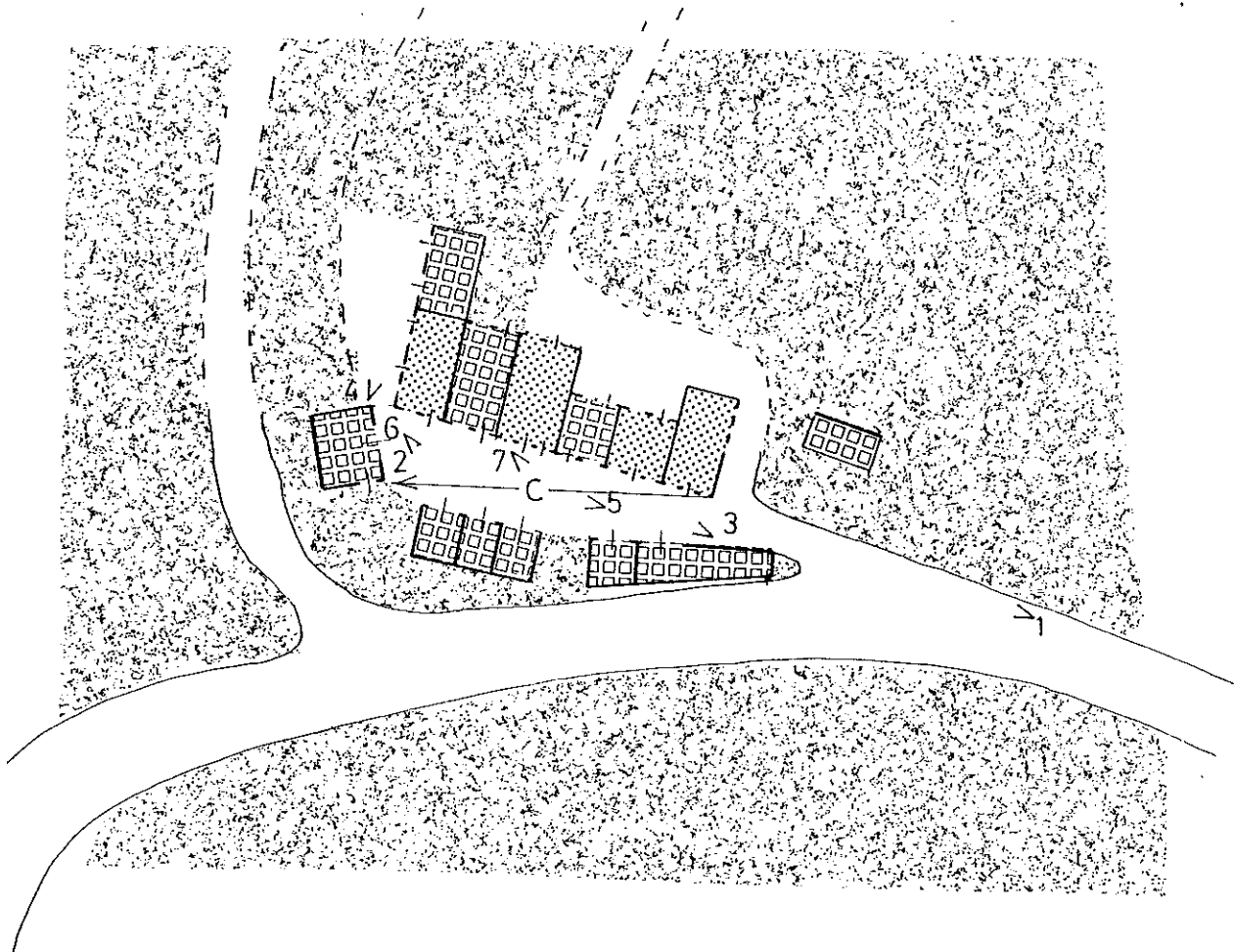
DATI CATASTALI

SEZIONE

FOGLIO n.

MAPPA n.

PLANIMETRIA 1:1000

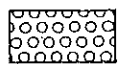
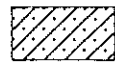


STATO ATTUALE

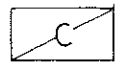
LEGENDA



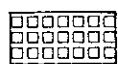
Residenza



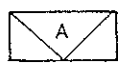
Stalla



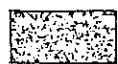
Corti



Deposito, Magazzino



AIA



Giardino, Brolo

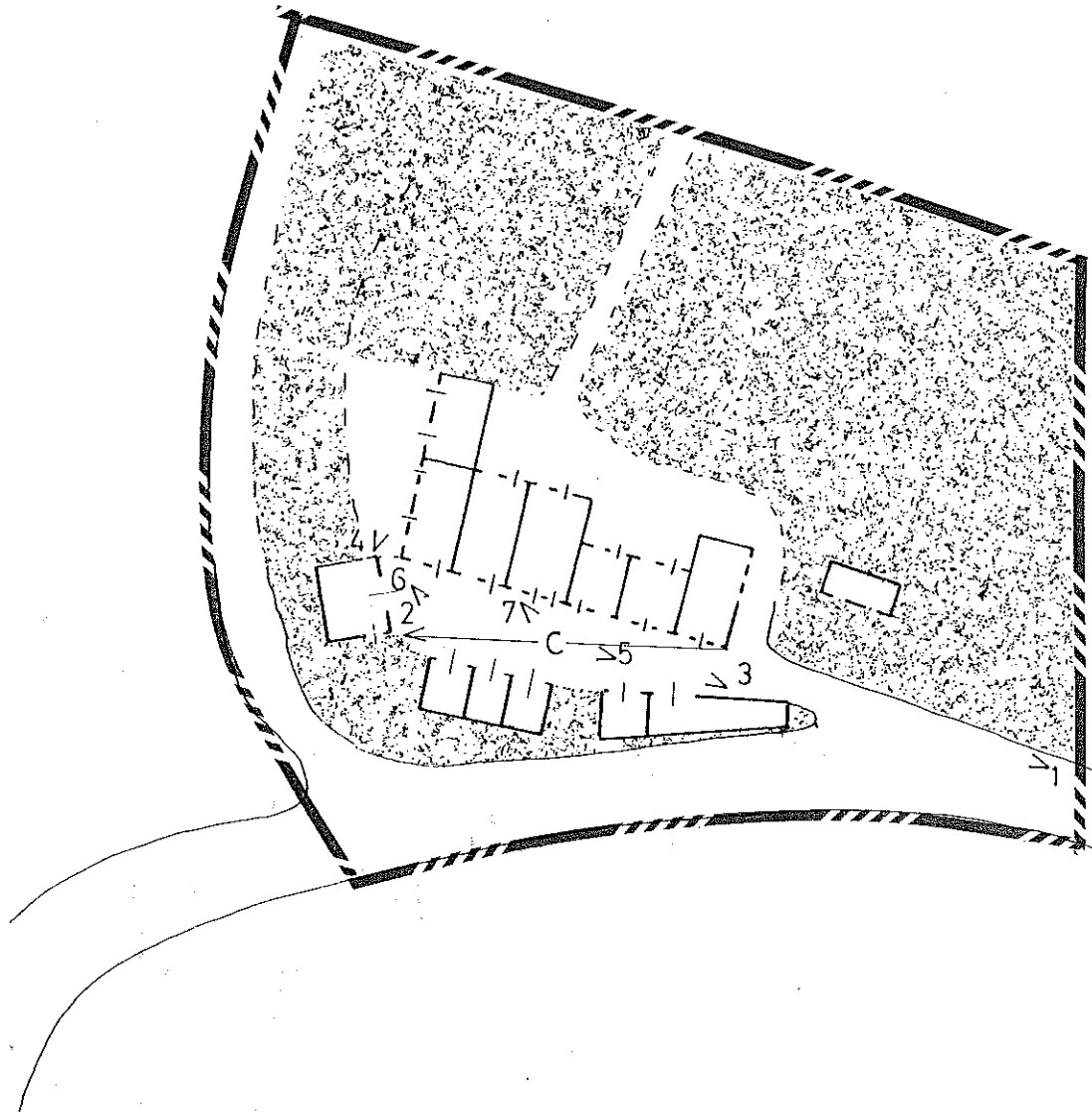
DATI CATASTALI

SEZIONE

FOGLIO n.

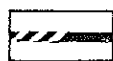
MAPPAN.

PLANIMETRIA

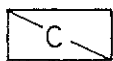


TUTELA AMBIENTALE

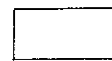
LEGENDA



Perimetro di tutela Art. 10 L.R. 24 85



Corti



Verde di tutela non edificabile

PIANTA 1:1000

GRADI DI PROTEZIONE

